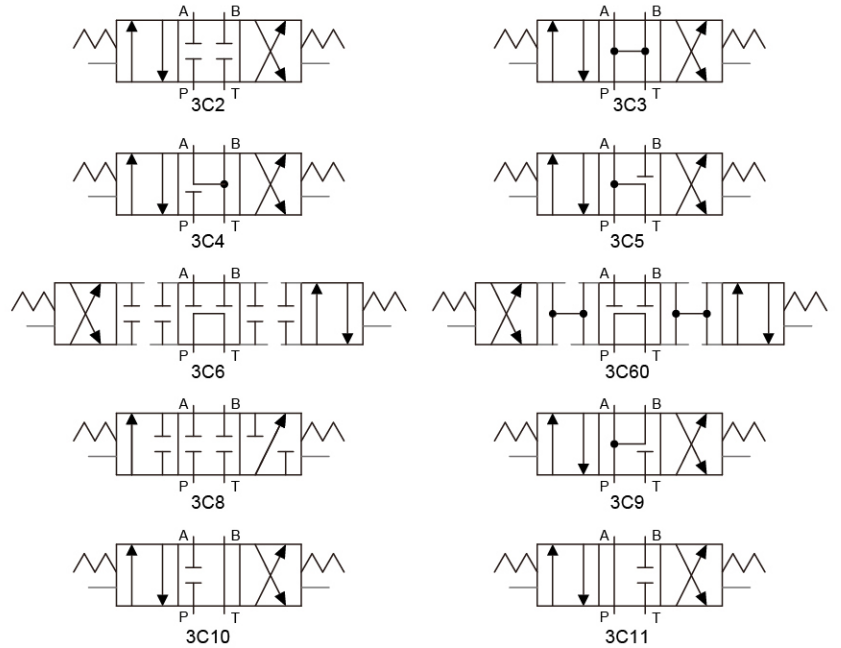


液控換向閥 Pilot Operated Directional Valves



選購指南 HOW TO ORDER

系列編號 SERIES NUMBER	閥口徑 VALVE SIZE	閥芯 SPOOL	導壓方式 PILOT TYPE	洩油方式 DRAIN TYPE	設計號 DESIGN NUMBER
DS	- 04G : 1/2" (座墊式) Sub-plated Type	- 3※2 、 3※4 、 3※6 、 3※60 ……等 (詳見迴路種類圖) See Circuit Diagram Types	- P : 外部導壓 External Pilot - NONE : 內部導壓 Internal Pilot	- D : 外部洩油 External Drain - NONE : 內部洩油 Internal Drain	- 10 (標準型) Standard Type
	- 06G : 3/4" (座墊式) Sub-plated Type	3 C 2 閥芯種類 Spool Type 閥芯彈簧佈置 Spool-Spring Arrangement B/C: 彈簧式 Spring Centred D: 珠子式 No-Spring Detented			
	- 10G : 1-1/4" (座墊式) Sub-plated Type	位置數 Position Number 2: 二位置 2 Position 3: 三位置 3 Position			

規格說明 SPECIFICATIONS

型式 Model Series	最大流量 Max. Flow (L/min)	最高使用壓力 Max. Operated Pressure MPa (kgf/cm ²)	最高引導壓力 Max. Pilot Pressure MPa (kgf/cm ²)	最低引導壓力 Min. Pilot Pressure MPa (kgf/cm ²)	T孔最高背壓 Max. T-Line Back Pressure Mpa (kgf/cm ²)		最高換向頻率 Max. Change Over Frequency (cycles/min)	重量 Weight (kg)
					外部洩油 EXT. Drain	內部洩油 INT. Drain		
DS-04G	300	31.5 (315)	25 (250)	0.8 (8)	21 (210)	14 (140)	120	6
DS-06G	500			0.8 (8)				12
DS-10G	1100			1 (10)				49.5

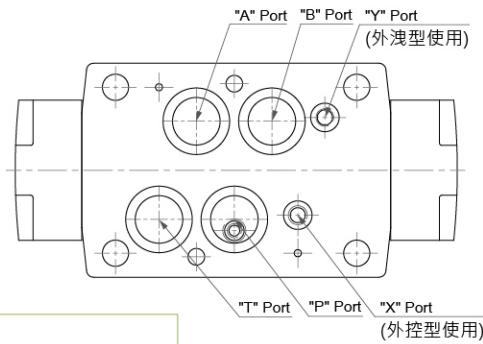
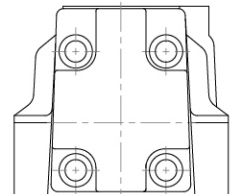
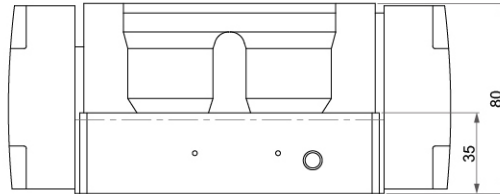
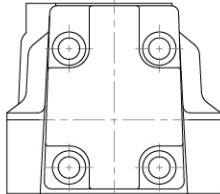
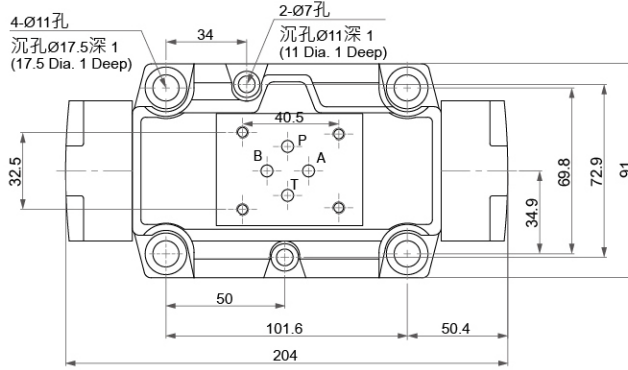
安裝螺絲 MOUNTING BOLTS

型式 Model Series	安裝螺絲 Mounting Cap Screw
DS-04G	M 6 X 45 L 2pcs / M 10 X 45 L 2pcs
DS-06G	M 12 X 45 L 6pcs
DS-10G	M 20 X 75 L 6pcs

液控換向閥 Pilot Operated Directional Valves

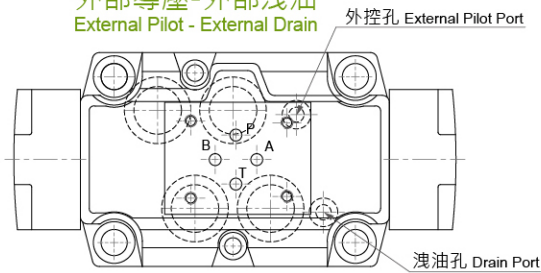
● 內控內洩型 : DS-04G- ※※※

內部導壓-內部洩油
Internal Pilot - Internal Drain



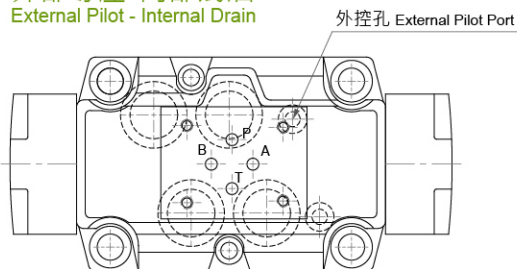
● 外控外洩型 : DS-04G- ※※※ -PD

外部導壓-外部洩油
External Pilot - External Drain



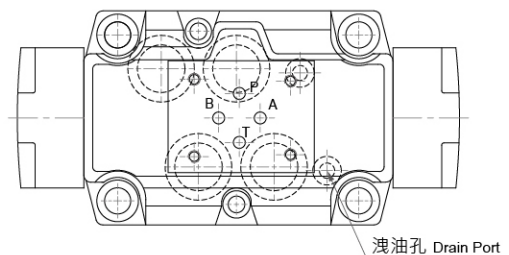
● 外控型 : DS-04G- ※※※ -P

外部導壓-內部洩油
External Pilot - Internal Drain



● 外洩型 : DS-04G- ※※※ -D

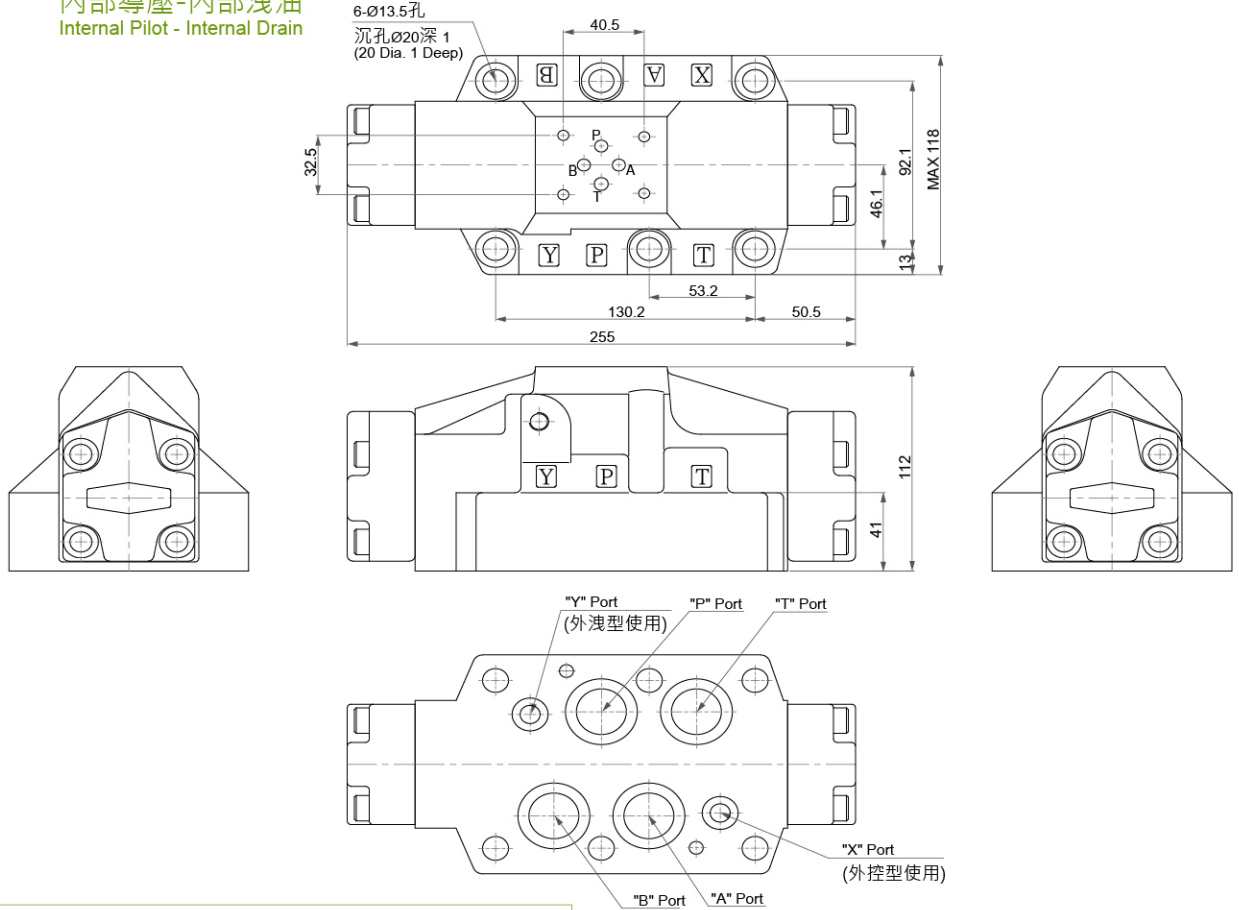
內部導壓-外部洩油
Internal Pilot - External Drain



液控換向閥 Pilot Operated Directional Valves

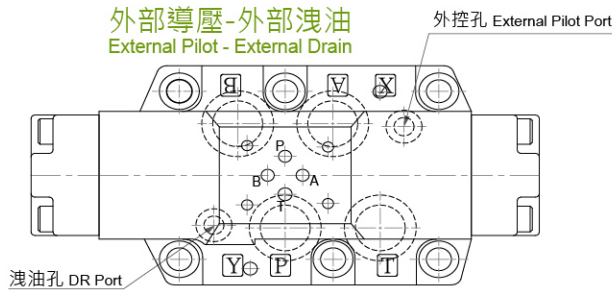
● 內控內洩型 : DS-06G-※※※

內部導壓-內部洩油
Internal Pilot - Internal Drain



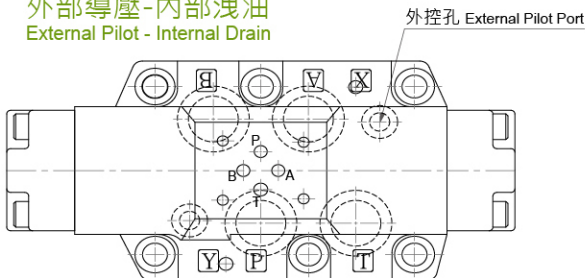
● 外控外洩型 : DS-06G-※※※-PD

外部導壓-外部洩油
External Pilot - External Drain



● 外控型 : DS-06G-※※※-P

外部導壓-內部洩油
External Pilot - Internal Drain



● 外洩型 : DS-06G-※※※-D

內部導壓-外部洩油
Internal Pilot - External Drain

