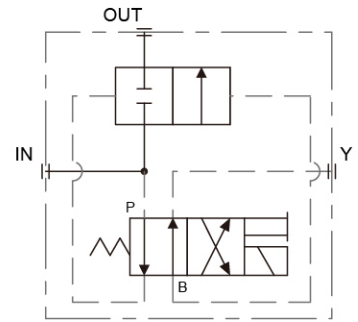
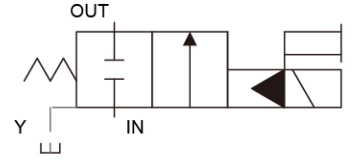


液控節流閥 Pilot Operated Restrictors



選購指南 HOW TO ORDER

SD	06	G	E	T	10
系列編號 SERIES NUMBER	閥口徑 VALVE SIZE	安裝型式 TYPE OF CONNECTION	導壓方式 PILOT TYPE	洩油方式 DRAIN TYPE	設計號 DESIGN NUMBER
SD	- 06 : 3/4"	G : 座墊式 Sub-plated Type	- E : 外部引導 External Pilot	- T : 外部洩油 External Drain - NONE : 標準型 Standard Type	- 10 (標準型) Standard Type
	- 10 : 1-1/4"		- V : 壓力補償 Pressure Compensating		

規格說明 SPECIFICATIONS

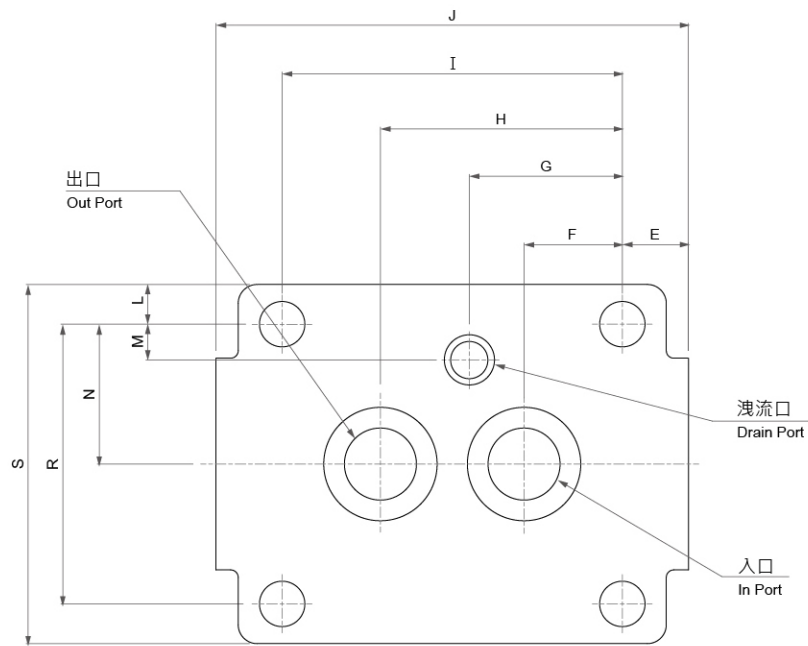
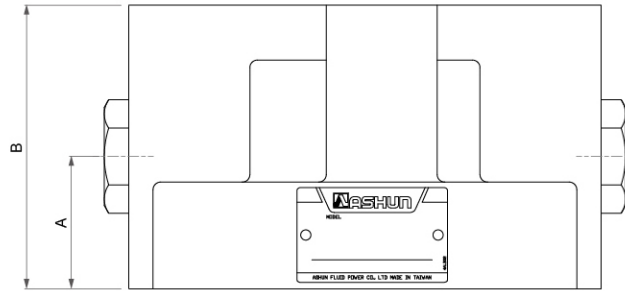
型式 Model Series	最高使用壓力 Max. Operated Pressure MPa (kgf/cm ²)	最大流量 Max. Flow (L/min)	重量 Weight (kg)
SD-06G	21 (210)	120	5
SD-10G		240	8.3

安裝螺絲 MOUNTING BOLTS

型式 Model Series	安裝螺絲 Mounting Cap Screw
SD-06G	M 10 X 45 L 4pcs
SD-10G	M 12 X 55 L 4pcs

液控節流閥 Pilot Operated Restrictors

● SD-(06/10)G



■ 尺寸說明 DIMENSION

型式 Model Series	A	B	E	F	G	H	I	J	L	M	N	R	S
SD-06G	35	75	17.5	26	40.5	64	90	125	10.5	9.5	37	74	95
SD-10G	40	86	19	34	47	78	112	150	14.5	16	43	86	115